

Hearing with ease.

Wireless CROS* or BiCROS

using wireless streaming

easeHD



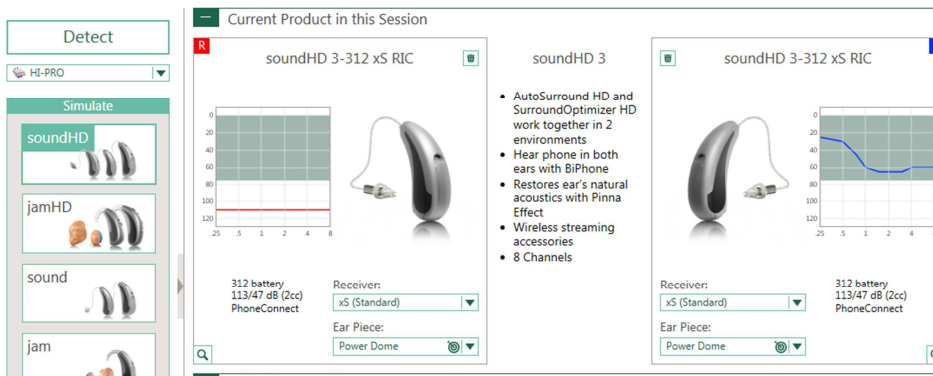
Hearing with ease.

Use this guide to program a pair of easeHD products with BiPhone functionality as a wireless CROS* or BiCROS using the BiPhone program.

In this example, the Right ear is the unaidable ear and the Left ear is the better ear with some hearing loss.

Step 1

Detect the Hearing Instruments

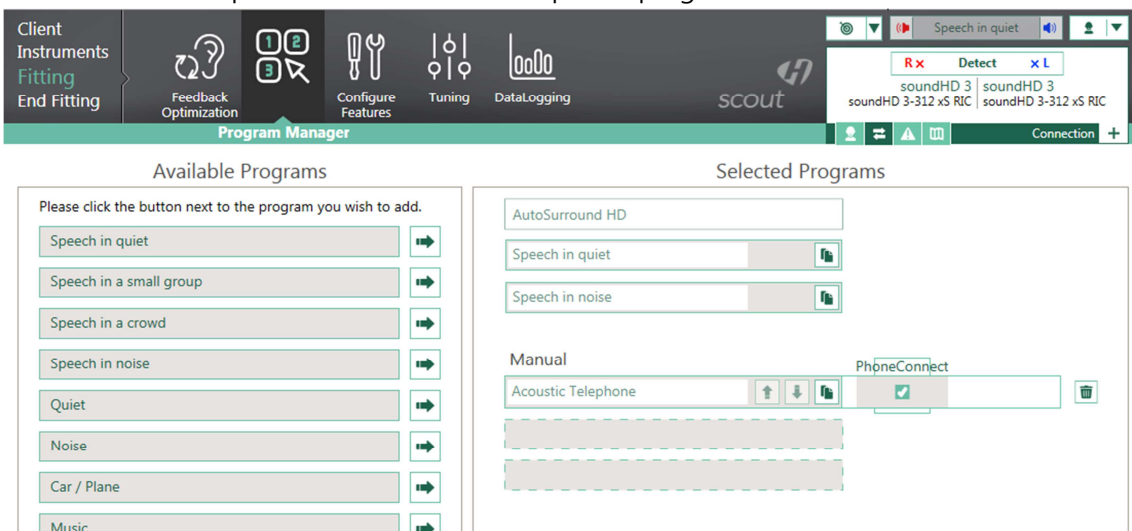


Make selections on the Acoustics & Accessories screens as appropriate. Run the Feedback manager if desired, but it is only necessary to run it for the better (in this case Left) ear.

Step 2

Fitting / Program Manager screen

- Add a Telephone or an Acoustic Telephone program:



- Change program name to CROS or BiCROS if desired
- Uncheck the PhoneConnect box

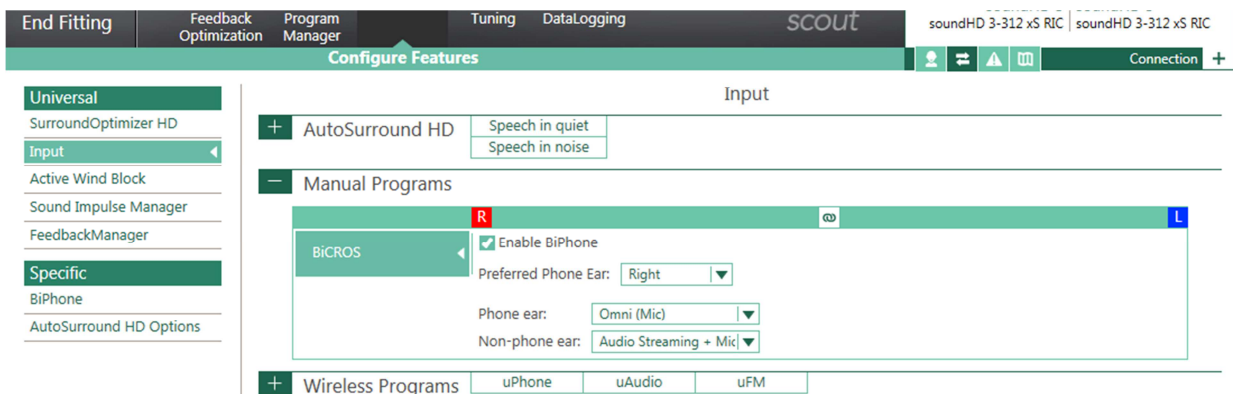


*Technically, since the mic on the better side cannot be turned off in the software, these aids cannot be programmed as a true CROS fitting. Gain for a normal hearing ear will be very low and therefore unnoticeable.

Step 3

Fitting / Configure Features screen

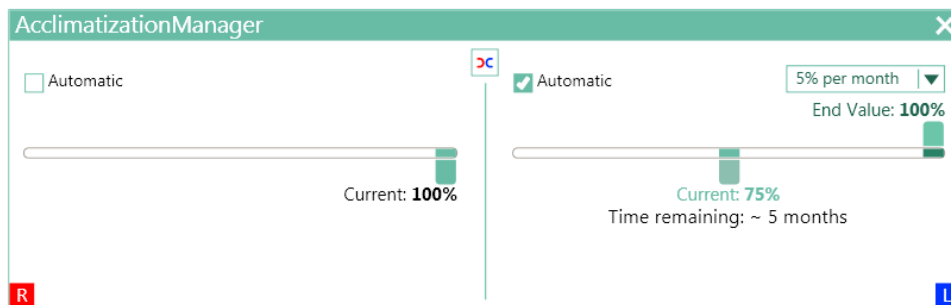
- From the menu on the left select Input
- Open "Manual Programs" from the menu in the middle
- Enable BiPhone
- Preferred Phone Ear = unaidable ear or transmitter
- Input on the Phone Ear should be "Omni (Mic)"
- Input on the Non-Phone Ear (= Better Hearing side) should be "Audio Streaming + Mic"



Step 4

Fitting / Tuning screen

- Select the CROS or BiCROS program from the menu on the left
- Click on the AcclimatizationManager Box at the bottom of the screen
- Click the "Unlink" button followed by unchecking "Automatic" on the unaidable side.
 - Next, slide the green "Current" slider to 100% on that side



- Click on the Soft/Mod/Loud Controls box at the bottom of the screen
- Click the "Unlink" button, followed by clicking on the word "All" for the unaidable side

Hearing with ease.

- Reduce gain completely in all bands. This will stop sound from exiting the earhook of the hearing instrument on the unaidable ear and stream sound (the input to the mic on that side) only to the better ear

Soft / Mod / Loud Controls

	Low	Mid	High		Low	Mid	High	All
Soft	14	22	10	Soft	3	18	16	Soft
Mod	12	15	4	Mod	2	16	15	Mod
Loud	7	7	-6	Loud	1	9	9	Loud
CR	1,4	1,7	2	CR	1,2	1,9	1,9	CR

Click to adjust overall gain at all frequencies.

1 dB

View right ear only

View left ear only

Client Instruments Fitting End Fitting

Feedback Optimization Program Manager Configure Features Data logging

scout

BICROS

soundHD 3 soundHD 3
soundHD 3-312 x5 RIC soundHD 3-312 x5 RIC

All Programs

AutoSurround HD +
Manual -
BICROS ◀
Wireless +

Gain | Insertion Gain

dB

125 250 500 1k 2k 4k 8k Hz

Gain | Insertion Gain

dB

125 250 500 1k 2k 4k 8k Hz

Soft / Mod / Loud Controls

	Low	Mid	High		Low	Mid	High	All
Soft	1	-11	-18	Soft	3	18	16	Soft
Mod	1	-11	-18	Mod	2	16	15	Mod
Loud	1	-11	-18	Loud	1	9	9	Loud
CR	1	1	1	CR	1,2	1,9	1,9	CR

3 dB

View right ear only

View left ear only

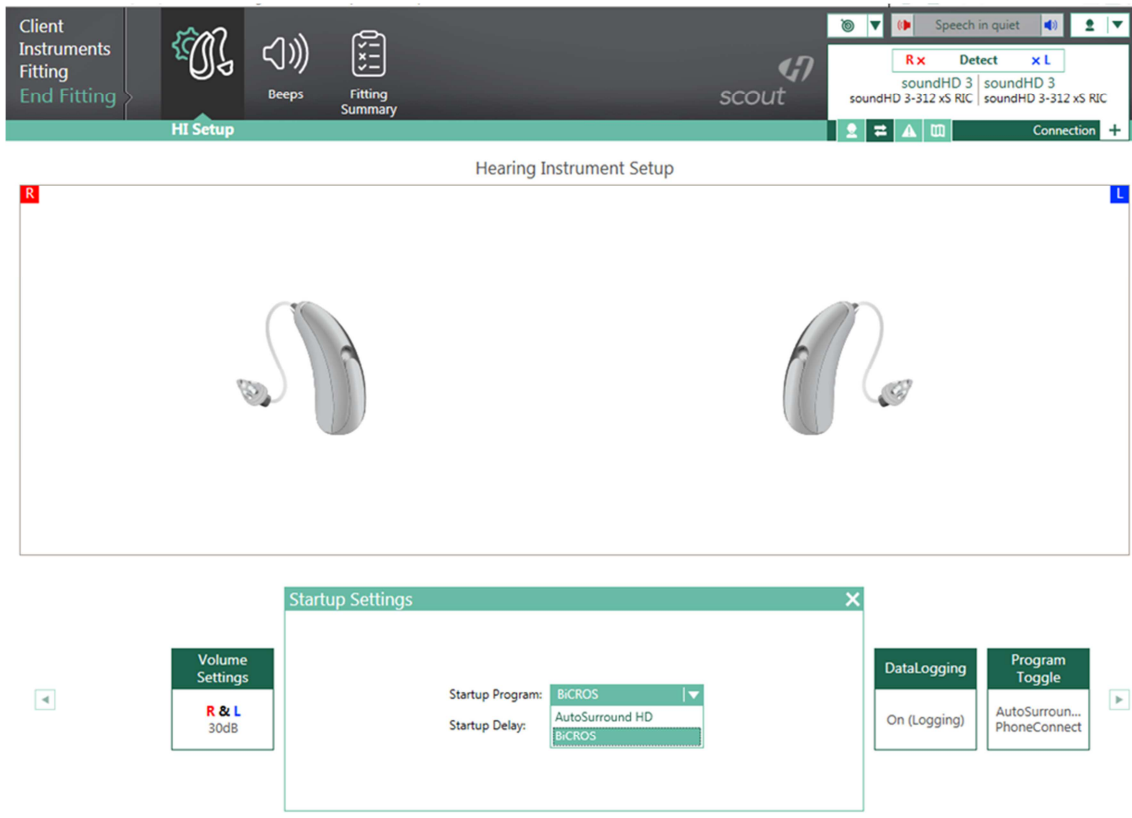
MPO / CR Co Adjust

Step 5

End Fitting / HI Setup screen

- Click on the Startup Settings box at the bottom of the screen and change the Startup program to program 2 (in this example the BiCROS program)

Hearing with ease.



- The hearing aid will now boot up in the second program
- Click on the Program Toggle box and uncheck "Include AutoSurround HD" which will make BiCROS the only program on this aid
- More than one Telephone or Acoustic Telephone program can be added and configured similarly if needed



- Now the BiPhone program is configured as a CROS* or BiCROS, transmitting the sound from the unaidable ear to the better ear via wireless audio streaming
- Save to the aid & database (and accessories, if any)

Remember that while connected to the computer for programming, the sound will not stream to the better ear. You need to reboot the hearing instruments (remove any cables or iCube II and restart the hearing aids) to have your patient experience this wireless CROS* or BiCROS solution



Hearing with ease.

For additional information regarding HANSATON as well as
HANSATON hearing systems and services, please contact us personally
or on the Internet at www.hansaton.com



Hansaton Akustik GmbH • Sachsenkamp 5 • 20097 Hamburg • Germany
Telephone: +49 40 29 80 11 0 • Fax: +49 40 29 80 11 860
E-mail: info@hansaton.de • Internet: www.hansaton.com