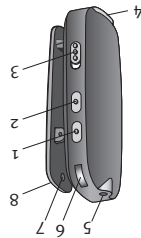


Your uMic™ at a glance

- 1 Volume up (+)
- 2 Volume down (-)
- 3 Power switch (I/O)
- 4 Charging input (mini-USB)
- 5 Microphone opening
- 6 Status indicator light
- 7 Eyelet for lanyard
- 8 Retaining clip



Understanding the status light

Information during operation:	Switching on	Green 2 seconds
	Streaming	Solid blue
	Streaming paused	Short blue blink
	Pairing mode	Rapid blue blink
Information about power and battery:	Switching on	Green 2 seconds
	Switching off	Red 2 seconds
	Charging	Solid red
	Charged and full battery	Solid green
	Additional red	
	Low battery warning	short blink as well as the main light
	uMic sleep mode or off	Indicator is unlit

uMic quick start guide



Unitron Hearing
20 Beasley Drive, P.O. Box 9017,
Kitchener, ON N2G 4X1 Canada



Unitron Hearing GmbH
Max-Eyth-Straße 20, 70736
Fellbach-Oeffingen, Germany

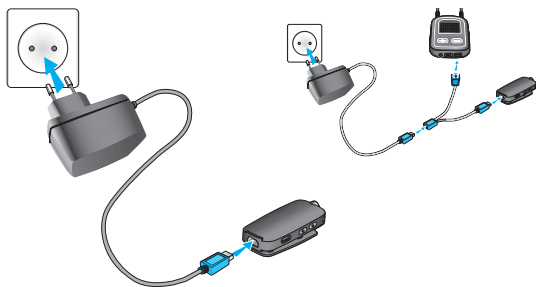
Distributed by
Hansaton Akustik GmbH
Sachsenkamp 5
D-20097 Hamburg, Germany



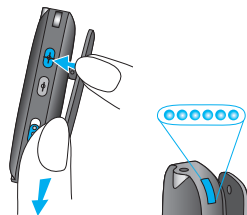
92186 DD-SP



Step 1

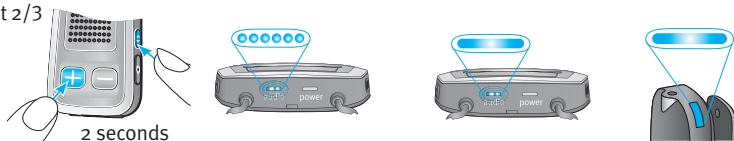


Step 2

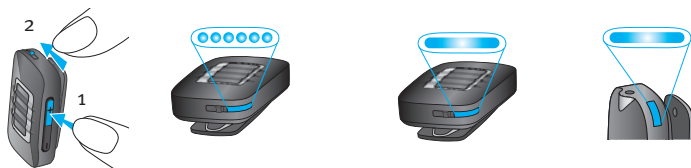


Step 3

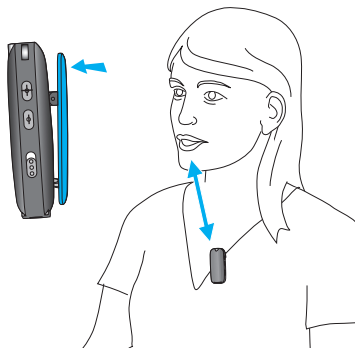
uDirect 2/3



uStream

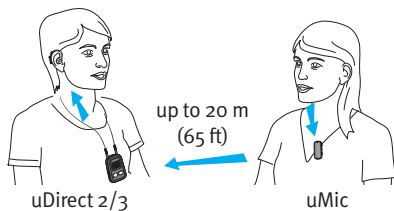


Step 4



hearing aid wearer

speaker

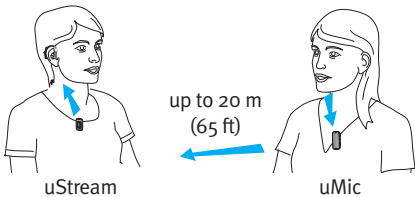


uDirect 2/3

uMic

hearing aid wearer

speaker



uStream

uMic