

GB

# Remote Control RCV1 Instructions For Use





# Your remote control

---

Hearing healthcare professional: \_\_\_\_\_

Telephone: \_\_\_\_\_

Serial number: \_\_\_\_\_

Replacement batteries: One AAA (1.5 Volt),  
standard or rechargeable

Warranty: \_\_\_\_\_

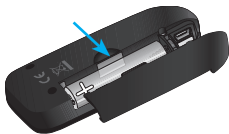
Date of purchase: \_\_\_\_\_

Battery size



AAA

Changing batteries



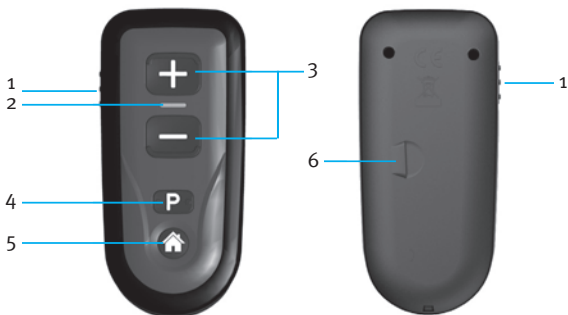
Low battery warning



Light indicator  
changes to  
yellow or red

# Quick reference

---



- 1 On/off switch
- 2 Indicator light
- 3 +/- buttons
- 4 Program change button
- 5 Home button
- 6 Battery compartment

## On/Off



# Table of contents

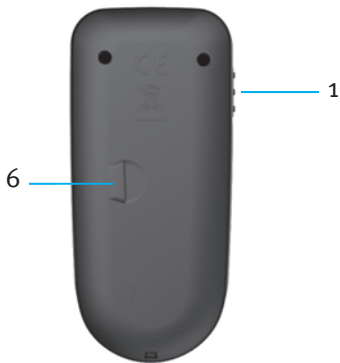
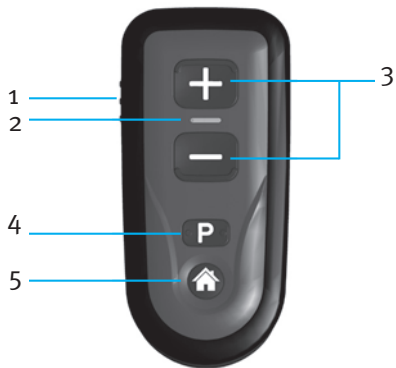
---

Your remote control at a glance .....	2
Turning your remote control on and off .....	4
Replacing the battery .....	5
Operating instructions .....	7
Adjusting your hearing aids with your remote control .....	9
Caring for your remote control .....	13
Cleaning your remote control.....	14
Troubleshooting guide.....	15
Warnings .....	17
Declaration of conformity .....	21

# Your remote control at a glance

---

- 1 **On-off switch** - turn your remote control on or off and lock it to avoid sending unintentional commands
- 2 **Indicator light** - will light up when you turn on the remote control or press any button  
**green light** = battery OK  
**yellow light** = low battery  
**red light** = very low battery
- 3 **+/- buttons**  
 adjusts the volume of your hearing aids  
 adjusts comfort/clarity for your hearing aids
- 4 **Program change button** - advances your hearing aid to the next listening program
- 5 **Home button** - returns your hearing aids to their start-up program and start-up settings
- 6 **Battery compartment** - allows access to change the battery



## Turning your remote control on and off

Your remote control has an On-Off switch located on the left side of the remote.

- To turn the remote control on, slide the switch to the On or unlocked position, revealing a white dot.
- To turn the remote control off, slide the switch to the Off, hiding the white dot. Sliding the switch to the Off position will avoid sending unintentional commands to your hearing aids (while the device is in your handbag or pocket).



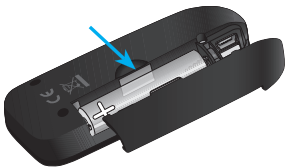


## Replacing the battery

---

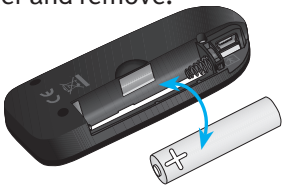
The battery compartment is located on the back of the remote control.

1. Slide the battery cover in the direction of the arrow.

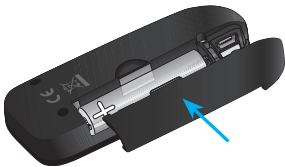


2. Grasp the old battery with your thumb and index finger and remove.

3. Insert the new battery into the battery compartment in the correct +/- position, placing the battery's minus (-) end into the compartment first.



4. Slide the battery cover in the opposite direction of the arrow.



## **Low battery warning**

When the indicator light shines yellow or red instead of green, your remote control is warning you that the battery in your remote is low. You will see the warning every time you turn on your remote control or send a command to your hearing aids until you change the battery or the battery dies.

## **Caring for batteries**

Always discard batteries in a safe and environmentally friendly way.

To prolong battery life, remember to turn the remote control off when not in use.

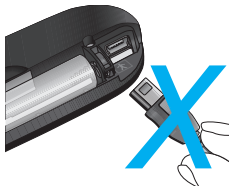
## Operating instructions

---

Before using your remote control, turn on your hearing aids to ensure they are able to receive the remote control commands.

Your remote control is designed to be used comfortably in your hand at a maximum distance of one arm's length. You do not have to point the remote at your hearing aids. Placing the remote control directly next to or too close to your hearing aids may decrease the remote's effectiveness.

⚠ The mini-USB port is to be used for programming purposes only by your hearing healthcare professional.



⚠ Interference with medical devices:

This remote control uses low-power, digitally coded transmission to communicate to your hearing system. Although unlikely,



interference with medical devices such as pacemakers is possible. Therefore pacemaker users must not keep this remote control in or near a breast pocket.

## Adjusting your hearing aids with your remote control

---

### **+/- buttons as comfort-clarity control**

The comfort-clarity control allows you to manage the levels of speech and background noise in your hearing aids and provides an additional fine tuning adjustment beyond a traditional volume control.

-  Press + to increase the clarity of sounds, such as speech.
-  Press - to improve comfort in noisy listening situations.

As the control is adjusted, your hearing aids may beep. Please refer to your hearing aid guide for more information on your hearing aid beeps.

## +/- buttons as volume control



Press + to increase the volume.




Press – to decrease the volume.

As the volume is adjusted, your hearing aids may beep. Please refer to your hearing aid guide for more information on your hearing aid volume beeps.

## Program change button

**P** Press the program change button to change to the next listening program in your hearing aids. Please refer to your hearing aid guide to determine which programs are available to you and your program beep notifications.

## Home button

 Press the Home button to return your hearing aids and settings to their start-up program and the settings. Please refer to your hearing aid guide to determine which program is your start-up program.

## Accessories

Your remote control can be used with a lanyard so that you can carry the remote around your neck. It can also be attached to a keychain. Attach the lanyard or keychain to the device, as illustrated below.



Your remote control can also be carried in its pouch and attached to items like your belt or handbag.



You can remove the clip from your remote control pouch if desired. Use an item like a pen to push in through the circle on the clip. While pushing in with the pen, slide the clip down.





## Caring for your remote control

---

Open the battery compartment and remove the battery if the remote control will not be used for long periods of time.

Do not use your remote control in the bath or shower or immerse it in water.

If your remote control does become wet, do not attempt to dry it in an oven or microwave. Do not adjust any controls. Open the battery compartment and allow your remote control to dry naturally for 24 hours.

Protect your remote control from excessive heat (hair dryer, vehicle glove box or dashboard).

Do not drop your remote control or knock it against hard surfaces.

## Cleaning your remote control

---

Do not use alcohol to clean your remote control. Use a damp cloth to clean the outside of the remote.

# Troubleshooting guide

---

You can refer to the troubleshooting table below if you are experiencing problems with your remote control. For problems with your hearing aids, please consult your hearing aid guide.

Cause	Possible remedy
<b>Indicator light not working</b>	
Not turned on	Turn on
Low/dead battery	Replace battery
Poor battery contact	Consult your hearing healthcare professional
Battery upside down	Insert battery plus (+) side up
<b>Indicator light is yellow or red</b>	
Low battery	Replace battery

Cause

Possible remedy

### **Hearing aids not responding to remote control commands**

Holding the remote control too far away

Move the remote control closer to you

Holding the remote control too close

Move the remote control to a maximum distance of one arm's length

For any problems not listed in the guide, contact your hearing healthcare professional.

## Warnings

---

- ⚠️ Your remote control should only be used as directed by your hearing healthcare professional.
- ⚠️ Do not use your remote control in explosion hazard areas.
- ⚠️ Do not use your remote control in locations forbidden to use electronic devices, such as an airplane.
- ⚠️ Store your remote control in a safe location for CT and MRI scans or for other electromagnetic procedures.
- ⚠️ Changes or modifications made to the remote control not expressly approved by Unitron Hearing may void the user's authority to operate the equipment.

### **Battery warnings**

- ⚠️ Never leave your remote control or batteries where small children and pets can reach them.

- ⚠️ Never put your remote control or batteries in your mouth. If a battery is swallowed, call a physician immediately.

## Precautions

- ⚠️ If your remote control fails to operate after you have correctly inserted a new battery, contact your hearing healthcare professional.
- ⚠️ Always bring both your remote control and your hearing aids for service questions.
- ⚠️ Your remote control and your hearing aids are given a unique communication code. Because of this code, your remote control will not affect hearing aids worn by others.
- ⚠️ Your remote control uses the most modern components to provide an extremely reliable experience with virtually no interference from other devices. However, when operating the remote control near a computer terminal, communication device such as a digital cell phone, or other strong electromagnetic field, it may be necessary to be at least 24 inches (60 centimeters) away to ensure proper

operation. If your hearing aids do not respond to the remote control because of an unusual field disturbance, move away from the disturbing field.

## **Labeling**

The serial number and year of manufacture are located inside the battery compartment.

Please fill out the contact information sticker provided with your new remote control and affix it to the inside of the battery door.



# Declaration of conformity

---

Hereby, Unitron Hearing declares that this device meets the requirements of the Medical Device Directive 93/42/EEC & the Radio and Telecommunications Terminal Equipment Directive 1999/5/EC. The full text of the Declaration of Conformity can be obtained from the addresses below.

## Manufacturer:

Unitron Hearing  
20 Beasley Drive, P.O. Box 9017  
Kitchener, ON N2G 4X1  
Canada

## EU Representative:

Unitron GmbH  
Max-Eyth-Straße 20, 70736  
Fellbach-Oeffingen, Germany

This device is certified under:

USA FCC ID: VMY-RCV1

Canada IC: 2756A-RCV1

This device complies with Part 15 of the FCC Rules and with RSS-210 of Industry Canada. Operation is subject to the following two conditions:

- 1) this device may not cause harmful interference and
- 2) this device must accept any interference received, including interference that may cause undesired operation.

Changes or modifications made to this device not expressly approved by Unitron Hearing may void the FCC authorization to operate this device.

Australia:  N15398

New Zealand: Z 1285



With the CE symbol, Unitron confirms that this Unitron product, including accessories, meets the requirements of the Medical Devices Directive 93/42/EEC as well as the R&TTE Directive 1999/5/EC on radio and telecommunications transmitters. The numbers after the CE symbol correspond to the code of certified institutions that were consulted under the above-mentioned directives.



This symbol indicates that the products described in these user instructions adhere to the requirements for an application part of Type BF of EN 60601-1. The surface of the device is specified as application part of the Type BF.



This symbol indicates that it is important for the user to pay attention to the relevant warning notices in these user guides.



## Australian EMC and Radiocommunications compliance label in Australia.

Operating conditions

This device is designed such that it functions without problems or restrictions if used as intended, unless otherwise noted in these user guides.  $-10^{\circ}$  –  $55^{\circ}$  Celsius and relative humidity of  $<95\%$  (non condensing).

Transport and storage conditions

During transport or storage, the temperature should not exceed the limit values of  $-20^{\circ}$  –  $60^{\circ}$  Celsius and relative humidity of  $90\%$  for a long period of time. The air pressure between 500 and 1100 hPa is appropriate.



The symbol with the crossed-out garbage bin is to make you aware that this device may not be thrown away as normal household waste. Please dispose of old or unused device at waste disposal sites intended for electronic waste, or give your device to your hearing care professional for disposal. Proper disposal protects the environment and health.





## **Unitron Hearing**

20 Beasley Drive, P.O. Box 9017,  
Kitchener, ON N2G 4X1 Canada

## **European Representative**

Unitron Hearing GmbH  
Max-Eyth-Straße 20, 70736  
Fellbach-Oeffingen, Germany





92171

DD-SP

Distributed by

Hansaton Akustik GmbH • Sachsenkamp 5 • 20097 Hamburg

Telefon: 040 29 80 11 110 • Fax: 040 29 80 11 850

E-Mail: [info@hansaton.de](mailto:info@hansaton.de) • Internet: [www.hansaton.com](http://www.hansaton.com)